

# Notice de pose

## Platine pour poteaux

PVC 80x80 et 120x120



**SOLUTIONS**  
pour votre habitat



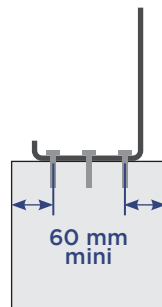
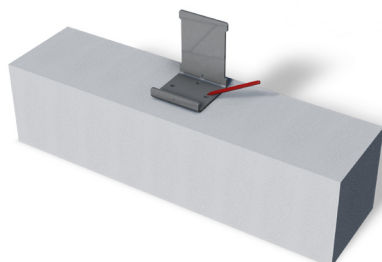
**CONCEPTEUR & FABRICANT FRANÇAIS**

Pose

# PRINCIPE DE POSE D'UNE PLATINE

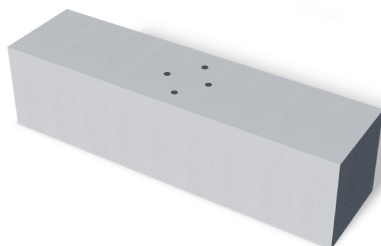
## ÉTAPE 1

Positionner et tracer.



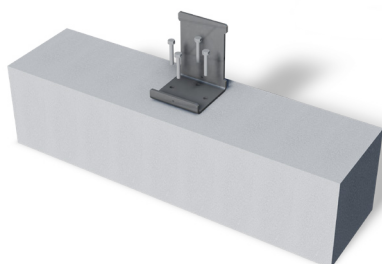
## ÉTAPE 2

Percer  $\varnothing$  9 mm.



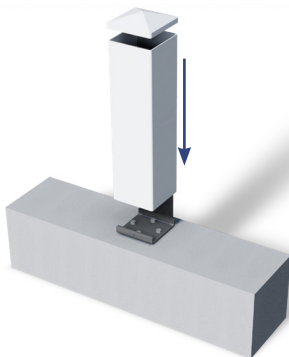
## ÉTAPE 3

Visser la platine (adapter le type de fixation en fonction du support).



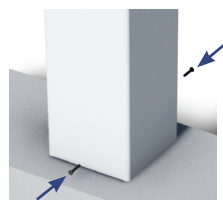
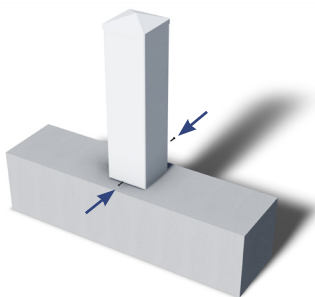
## ÉTAPE 4

Glisser le poteau.



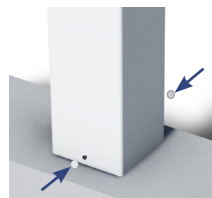
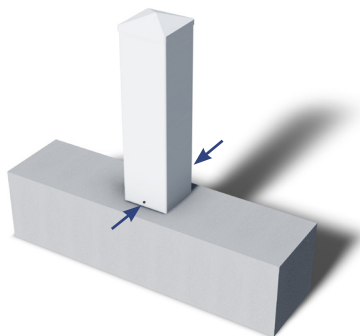
## ÉTAPE 5

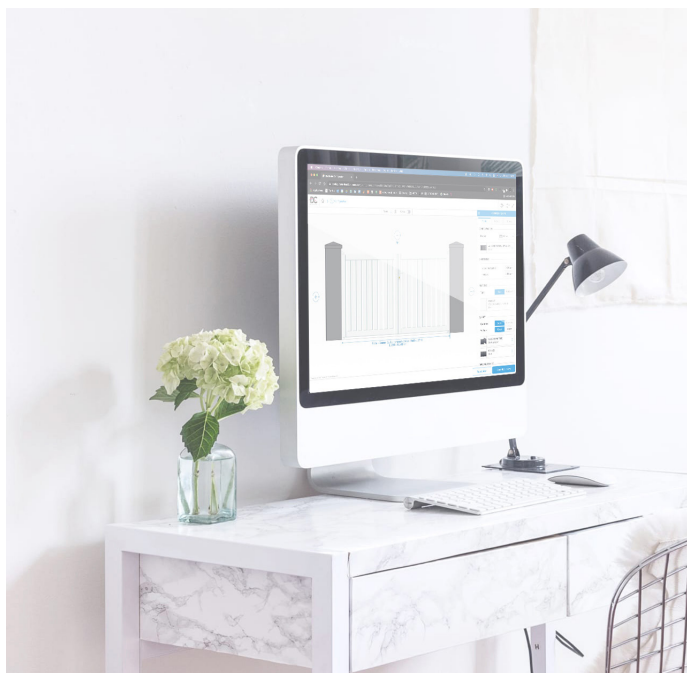
Fixer le poteau à la platine à l'aide des vis autoforeuse 4.8 x 19



## ÉTAPE 6

Positionner les caches vis.





Retrouvez toutes nos notices sur  
notre site internet

***dc-designconception.fr***

**0 892 681 310** Assistance technique  
0.40€/min

**sav@dcprod.fr**